

Dell KACE™ K2000 Deployment Appliance

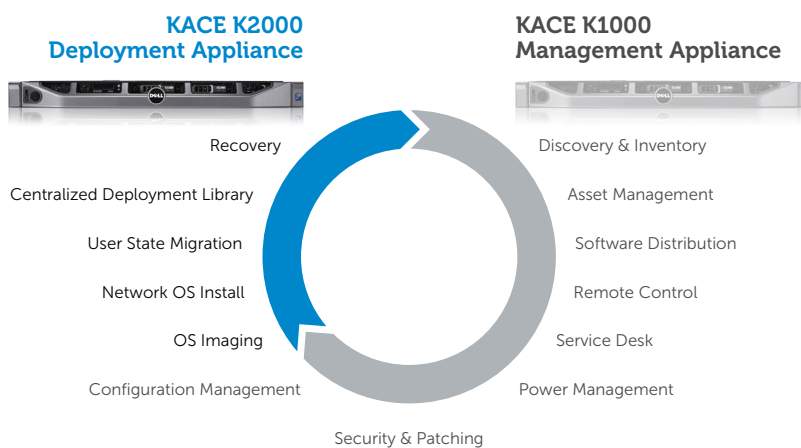


Easy-to-use, comprehensive, affordable
deployment appliance

The Dell KACE™ K2000 Deployment Appliance fulfills the systems provisioning needs of an organization including inventory assessment, OS deployment, application installation, configuration and recovery.

Designed to save you time, and your organization money, the KACE Deployment Appliance typically installs in under one day at a low total cost.

Computer Lifecycle Management



The KACE Deployment Appliance delivers a fully integrated systems provisioning solution, unlike traditional OS deployment software solutions. Traditional software typically requires complex and time-consuming deployments and may not fully automate systems provisioning. The KACE Deployment Appliance breaks the complexity and cost barrier by utilizing an appliance-based architecture.

KACE Appliances are available as both physical and virtual appliances, providing customers with a variety of deployment options and allowing them to leverage their investment in VMware Infrastructure.

KACE Benefits

Organizations of all types use the KACE Family of Appliances to gain benefits in markets such as education, state and local government, healthcare, financial services, manufacturing, legal, and many more.

- **Deploy in as little as one day**
- **Train in hours via the Web**
- **Upgrade in minutes**
- **Low total cost of ownership**
- **No hardware or software pre-requisites**
- **No incremental professional service fees**

“For me, the KACE Appliance really is the extra person. If something goes wrong, I don’t have to physically visit the machine... I can push out a new image, reboot, and there’s a new machine sitting there. Problem solved.”

*Leigh Scaggs,
Network Administrator,
Boyd County Public Library*

Go to www.dell.com/kace for details.

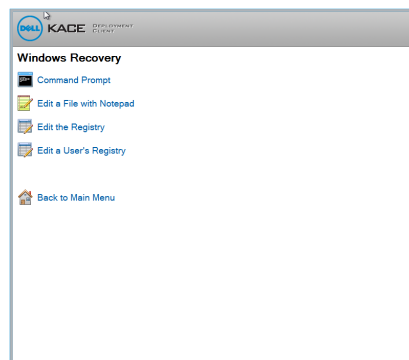
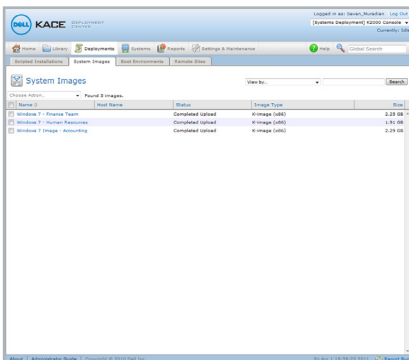
KACE K2000 Deployment Appliance

Fulfills the systems deployment needs of any organization

- **Disk imaging** is intelligent, file-based K-imaging that reduces image management, capture and storage costs for Windows and Mac OS
- **Windows driver management** automatically downloads the latest drivers by computer model, while the driver harvesting tool and hardware inventory make working with other drivers easy
- **Centralized deployment library** for easy storing of deployment assets in one manageable, secure location
- **Customizable pre- and post-deployment configuration** enables automation of all deployment tasks, such as RAID and BIOS configuration, application installation and your own scripts
- **Remote systems repair & recovery** with native Windows and Mac tools to recover systems—including native imaging tools
- **Integrated reporting** eases systems deployment and appliance administration
- **Windows network OS install** allows for hardware independent provisioning of any system
- **Windows user state migration** centrally captures, stores and deploys user-specific settings and files, enforces compliance by excluding files by type and location, and offers a single-step offline migration
- **Remote site management** allows deployment of disk images, operating systems, drivers and applications at remote sites without dedicated on-site hardware or staff
- **Computer inventory scanning and assessment** to collect detailed hardware inventory on target systems
- **Network boot architecture** allows deployment assets to be provisioned over the network, even for bare-metal machines, i.e. those without any operating system and software
- **Offboard storage** allows you to add Network File System Network Attached Storage to allow the K2000 to grow with your needs

“Using the K2000 Appliance we are saving great amounts of time over our old methods. In the past we would manually image 10 or 15 computers in a day. With the K2000, we’re able to image upwards of over 100 computers in one day.”

Mark Luffman
Director of IT Service,
Cottonwood Oak Creek
School Dist.



The K2000 Deployment Appliance utilizes a familiar tab-based interface that allows IT administrators of all skill levels to accomplish the breadth of systems deployment tasks.

KACE 2011 Customer Survey Results

- 71% of users who evaluated ROI report the KACE Appliance paid for itself in less than six months
- 62% of KACE customers deployed in less than a week
- 74% of KACE customers reported “high” satisfaction with KACE Appliances

K2000 Administration: Centralized for Simplicity

The K2000 includes an integrated web-based console for centralized systems deployment and systems recovery.

- The easy-to-use console can be accessed via any device using a supported browser
- Remote access to all functionality across the deployment lifecycle
- KACE K1000 Management Appliance integration includes single sign on, fast switching and viewing of K1000 inventory from the K2000

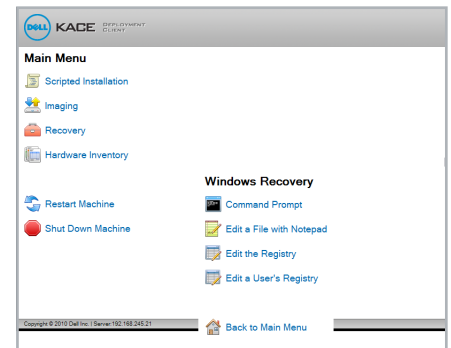
Remote Replication with Virtual Remote Appliances

Virtual remote appliances allow a single centralized K2000 Deployment Appliance to stage and deploy disk images, network OS installs, drivers and applications to remote sites without the need for dedicated hardware or personnel at remote facilities. They also provide remote PXE and NetBoot services. Virtual remote appliances are easy to deploy and maintain, and dramatically reduce the cost and complexity of managing a multi-site organization.

- Includes integrated virtual infrastructure allowing deployment on almost any VMWare server product
- Granular control over the timing and contents of staged deployment assets
- Scheduled incremental synchronization and bandwidth throttling help minimize network utilization while keeping all remote sites updated with current deployment assets

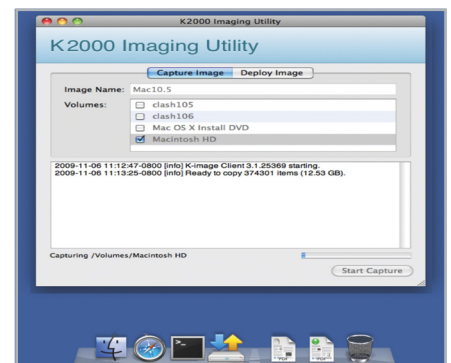
K2000 Boot Environment (KBE) for Windows platforms

Leverage the power of Windows PE without the pain. The K2000 eliminates the need for custom scripts and command line arguments.



Mac OS X NetBoot for Mac platforms

Execute key functions for Mac systems such as image capture and deployment through the K2000 Mac imaging utility. The Finder interface of Mac OS X NetBoot allows it to double as a recovery tool.



Dell KACE Deployment Appliances

The Dell KACE Deployment Appliance is the all in one, easy and affordable appliance that fulfills the systems deployment needs of organizations of all sizes, including inventory assessment, OS and application provisioning, migration and recovery. The KACE Deployment Appliance supports plug-and-play deployment onto your LAN, and is simple to upgrade. Absolutely no up-front customization or programming effort is required to enable the appliance. Simply plug it into your network, and immediately begin deploying systems.

Tech Specs

		K2100s*	K2100s-ADV*	K2200s**
Capacity	Recommended Maximum Managed Nodes	1,000	3,500	10,000
	Storage	500 GB	1.5 TB	1.8 TB
Hardware	Platform	R420	R420	R420
	CPU Quantity	1	1	2
	Core Clock Rate	1.8GHz	2.2GHz	2.2GHz
	Cores	4	6	6
	NIC	2X1GB (Intel)	2X1GB (Intel)	2X1GB (Intel)
	Memory	1X4G	2X4G	4X4G
	Memory Speed	1600	1600	1600
	RAID Controller	H710 Mini	H710 Mini	H710 Mini
	RAID Level	1	5	5
	Hot-swappable Hard Drives	2 X 500GB	4 X 500GB	4 X 600GB SAS
		3.5" 7.2K RPM 3Gb/s	3.5" X 7.2K RPM 3Gb/s	2.5" X 10K RPM 3Gb/s
	Additional Media	DVD	DVD	DVD
	Systems Mgmt.	iDRAC Enterprise	iDRAC Enterprise	iDRAC Enterprise
	Power Supply	Single 550W	Redundant 550W	Redundant 550W
	Branding (Badge)	K2100 Badge	K2100-ADV Badge	K2200 Badge
Height	1RU	1RU	1RU	

		VK2000
Capacity	Recommended Deployment Environment (Nodes)	10,000
Virtual Machine Requirements	VCPUs	2 VCPUs (4000 Mhz or More Reserved/Shares = High)
	Memory	2 GB (512 MB or More Reserved/Shares = High)
	Network	1 Ethernet Port
	Available Disk	500 GB [†]
	Server and Operating System	64-Bit

*Node-based licensing

**Appliance-based licensing

[†] Importation of these free utilities is facilitated by easy-to-use wizards during the KACE Appliance JumpStart.

[†] Some ESX VMFS datastore restrictions may apply. See Production Appliance Support for details.

System Requirements

Target System Requirements

• Windows®

Windows 7
(Professional, Enterprise, Ultimate, x86 and x64 architectures)

Windows Vista
(Business, Enterprise, Ultimate, Edition support)

Windows XP
(Professional, Tablet PC Edition, Media Center Edition)

Windows Server 2008
(Web Edition, Standard Edition, HPC Edition)

Windows Server 2003
(Web Edition, Standard Edition, Enterprise Edition, Datacenter Edition, HPC Edition)

Windows 2000
(Professional, Server, Advanced Server, Datacenter Edition)

PXE-enabled network interface

X86 system architecture

Windows 64 Bit Support

Windows PE 3.0[†]

User State Migration Tool 3.02[†]

User State Migration Tool 4.0[†]

• Mac

Mac OS X 10.4 - 10.7

Web Administration Interface Requirements

Microsoft Internet Explorer 6.0+
Mozilla Firefox 3+, Safari 3+

VK2000 Appliance Requirements

VMware ESX and ESXi Server 3.5 and up

Open Virtualization Format (OVF) 1.0

Virtual Remote Site Appliance Requirements

VMware ESX and ESXi Server 3.5 or 4.0; VMWare Server or VMWare Workstation

2G RAM, 200G Disk, 2GHz processor
Open Virtualization Format (OVF) 1.0



Dell KACE Headquarters

2001 Landings Drive
Mountain View, CA 94043
877-MGMT-DONE Main
650-649-1806 Fax

www.dell.com/kace

kaceinfo@dell.com
European Sales: kaceemea@dell.com
Asia Pacific Sales: kaceapac@dell.com
Australia New Zealand Sales: kaceanz@dell.com
Greater China Sales: kacegc@dell.com

While every effort is made to ensure the information given is accurate, Dell does not accept liability for any errors or mistakes which may arise. Specifications and other information in this document may be subject to change without notice.

Dell and KACE are trademarks of Dell Inc. Dell disclaims any proprietary interest in the marks and names of others. Microsoft and Windows are registered trademarks of Microsoft Corporation.

